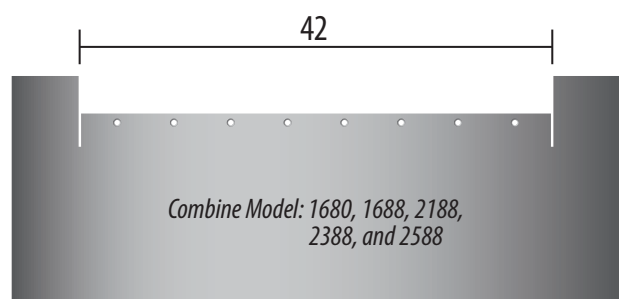
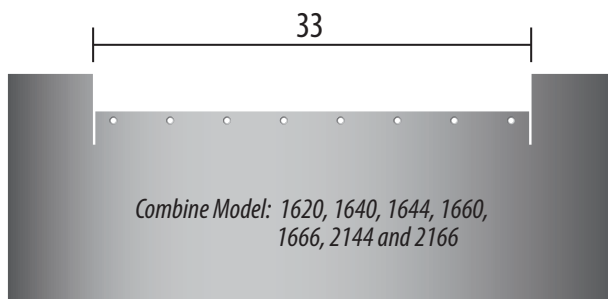


## PLEASE READ THE ENTIRE INSTRUCTION SHEET BEFORE STARTING INSTALLATION.

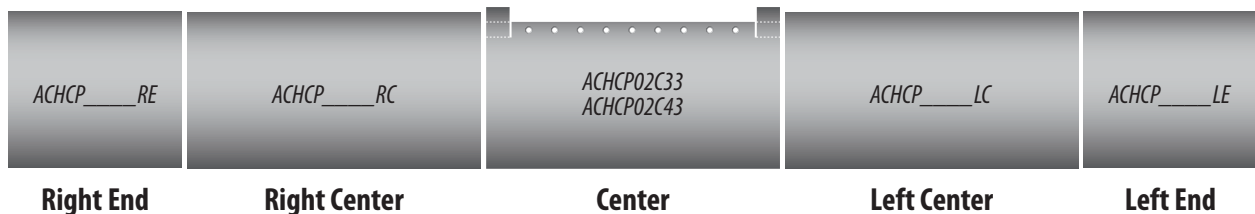
PLEASE REFER TO THE OPERATORS MANUAL FOR YOUR SPECIFIC COMBINE FOR PERTINENT SAFETY PRECAUTIONS THE TERMS. "LEFT", "RIGHT", "FRONT", & "REAR" ARE DETERMINED BY FACING IN THE DIRECTION THE COMBINE WILL TRAVEL WHEN IN USE.

### IMPORTANT:

Before you begin installation, compare the contents with the enclosed "Packing Slip" to confirm that you have received the correct panels and associated hardware for your model header. Please refer to the operators manual for your specific combine for pertinent safety precautions. Also confirm that you have received the correct center panel for your feeder opening and/or model combine as illustrated below.



**Panel Layout:** 08 ROW 30, 08 ROW 36 and 12 ROW 20



Forward

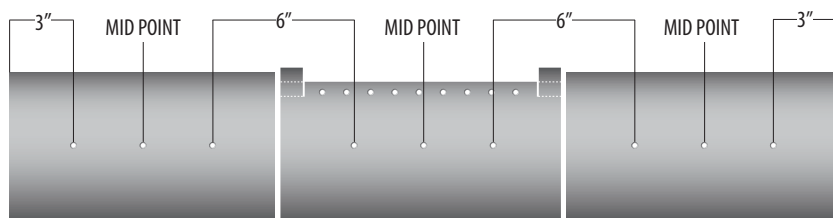


**Visit us online at [www.lundellplastics.com](http://www.lundellplastics.com) to see other innovative products! Online ordering NOW AVAILABLE!**

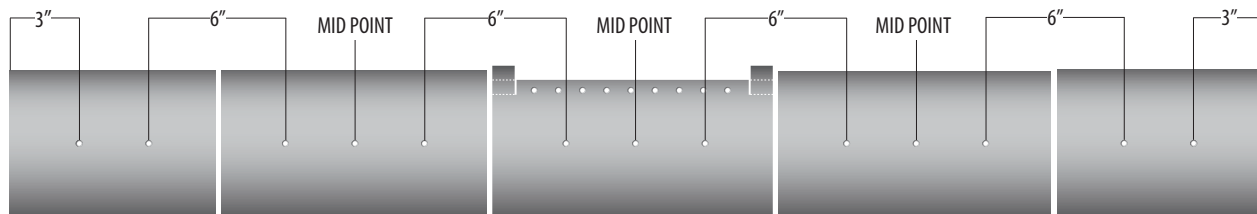
© Lundell Plastics Corporation · 400 W Market St. · Odebolt, IA 51458 · P 712.668.2400 · TF 877.367.7659 · F 712.668.2402

## RECOMMENDED HOLE LOCATION

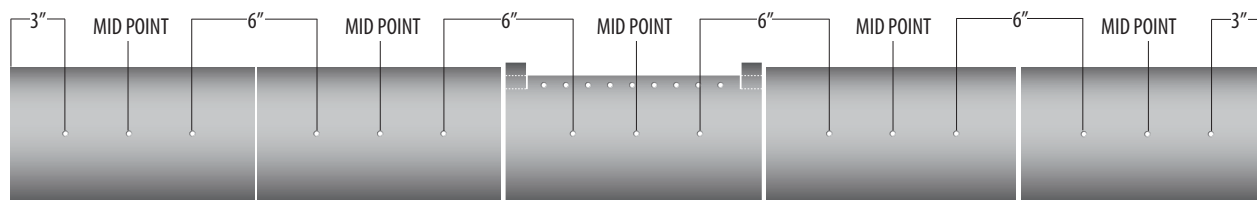
### 3 PANEL KIT



### 5 PANEL KIT

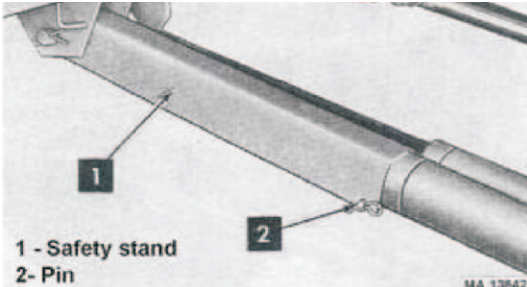


### 5 PANEL KIT 36" ROW CENTER



**Visit us online at [www.lundellplastics.com](http://www.lundellplastics.com) to see other innovative products! Online ordering NOW AVAILABLE!**

© Lundell Plastics Corporation · 400 W Market St. · Odebolt, IA 51458 · P 712.668.2400 · TF 877.367.7659 · F 712.668.2402



With the corn head connected to the combine, raise the feeder house to maximum height and engage the feeder safety lock.

**Combine Feeder Safety Lock:** *Shown below for reference only. See your operator's manual for specifics on your machine*

- Raise feeder to maximum up position and lower safety stop over the piston rod of the header lift cylinder and pin in place.
- Then lower feeder to lock stop in place. **Do not rely on the hydraulic system for support.**



1. Clean the metal trough to remove all dirt and crop residue. Remove all patches; repairs or added bolts that would restrict the poly covers from laying flat against the top surface of the metal trough. The poly covers can be installed over heavily worn metal and over holes in the metal plates if the holes do not exceed 3 inches in width (front to back) and are less than 18 inches in length (left to right).

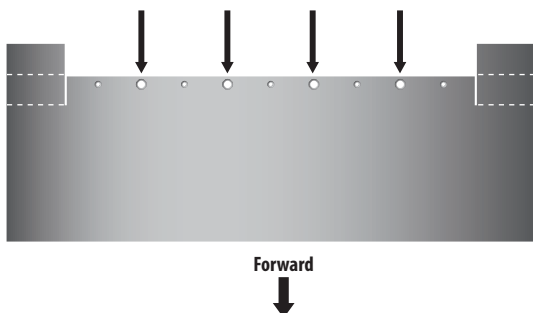


2. Remove the auger drive chain. Raise the auger approximately 3/4".

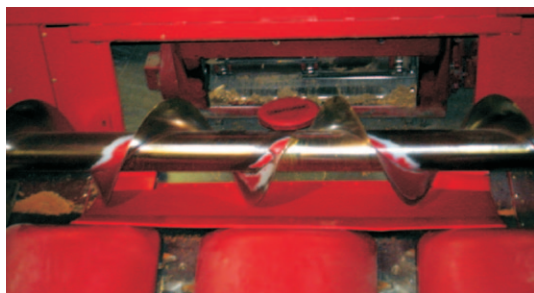


3. Remove the protective covers below the drive lines and gear boxes on the underside of the header.

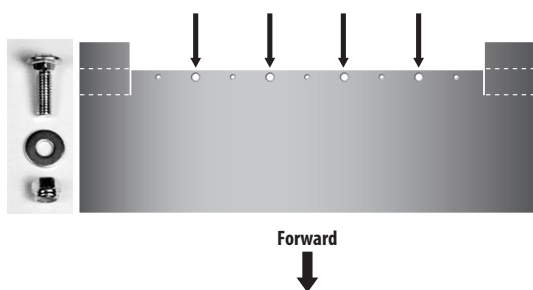
**Visit us online at [www.lundellplastics.com](http://www.lundellplastics.com) to see other innovative products! Online ordering NOW AVAILABLE!**



4. Remove the factory bolts that correspond to the slots along the rear of the center panel.



5. Insert the poly center panel under the auger as illustrated.  
**NOTE: IT IS VERY IMPORTANT TO PUSH THE POLY PANEL REARWARD UNTIL THE REAR EDGE OF THE POLY MAKES CONTACT WITH THE STRIPPER ANGLE AND THE FRONT EDGE "SNAPS" BEHIND AND BELOW THE FRONT STEEL RAIL OF THE HEADER.**



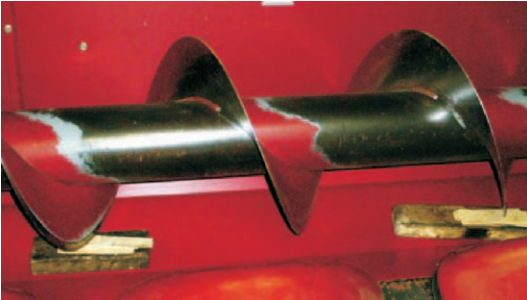
6. Align the center panel with the holes in the metal and replace the bolts removed in Step 4 with the 5/16"-18 x 1 1/4" carriage bolts as illustrated.



7. Using the remaining pre-drilled holes as a guide, drill thru the floor of the header with the 9/32" drill bit supplied.  
*Note: Secure the rear of the panel with the 1/4 x 3/8 hammer rivets.*

When using power tools, basic safety precautions should always followed to reduce the risk of personal injury. WEAR SAFETY GLASSES OR GOGGLES.

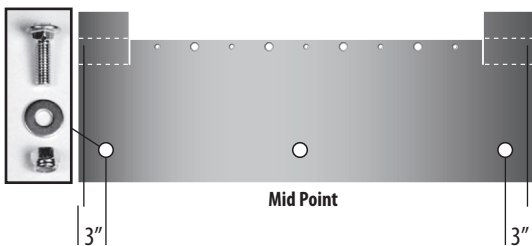
**Visit us online at [www.lundellplastics.com](http://www.lundellplastics.com) to see other innovative products! Online ordering NOW AVAILABLE!**



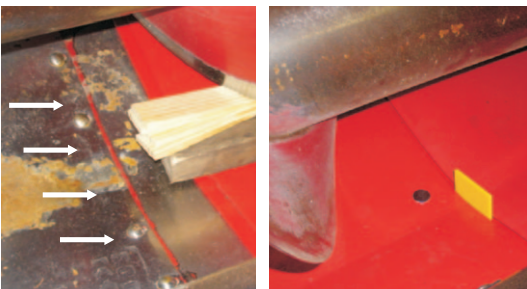
8. With the rear edge of the center panel secured, wedge the liner tight against the floor with the wooden shims supplied.



9. Drilling upward from underneath the header, use the 3/8" drill bit supplied to drill thru the metal trough and poly liner as illustrated. Drill at the lowest point in the trough. Install a 1/4-20 x 1 1/4" fanged elevator bolt in each hole before drilling the next hole.



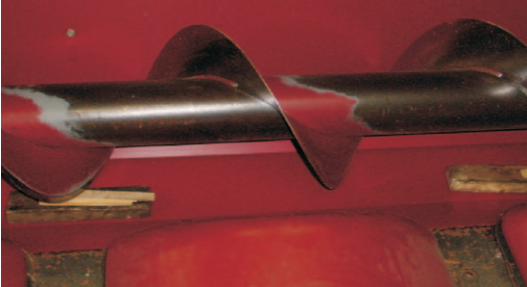
10. TIGHTEN THE NUT TO SEAT THE HEAD OF THE BOLT, THEN LOOSEN THE NUT 3/4 OF A TURN. This will allow the poly liner to expand and contract with temperature change.



11. Remove the factory bolts that join the center and the left and right floor sections.
12. Insert the remaining panels under the auger as in step 5. Using the 3/16" plastic block as a gauge and working from the center outward, position the panels with a 3/16" gap at each joint.

**Visit us online at [www.lundellplastics.com](http://www.lundellplastics.com) to see other innovative products! Online ordering NOW AVAILABLE!**

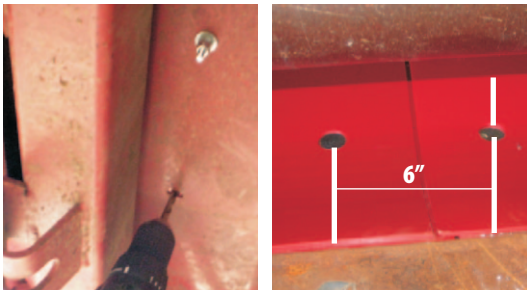




13. Wedge the panels tight against the bottom of the trough with the wooden shims supplied.

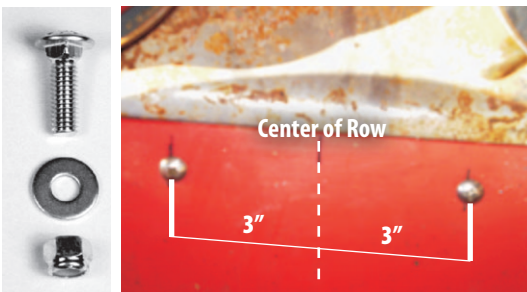


14. Drilling upward from underneath the header, re-install the factory bolts removed in Step 11.



15. With the panels wedged and properly gapped at each joint, finish securing each panel as was described in Step 11. Use the Recommended Hole Location as illustrated on the following page. Install a 1/4-20 x 1 1/4 fanged bolt in each hole before drilling the next hole.

*Note: **TIGHTEN THE NUT TO SEAT THE HEAD OF THE BOLT, THEN LOOSEN THE NUT 3/4 OF A TURN.** This will allow the poly liner to expand and contract with temperature change.*



16. To complete the installation, drill a 3/8" diameter hole 3 inches on either side of the center line of each row as illustrated below. Drill from the top side downward. Locate the hole approximately 3/4" from the front edge. Secure the panels with the 1/4-20 x 3/4 truss head screws supplied. Readjust the auger height for desired clearance.

*Note: Drill one hole to confirm that this location is correct to miss the gear box and clutch assembly on the underside.*

**WARNING** Proper application, installation, and operation of any machine and/or installation incorporating products sold by Lundell Plastics Corporation™ is the responsibility of the purchaser and/or end user. All local, state, and federal safety codes must be followed. Lundell Plastics Corporation™ is specifically not responsible for property damage and/or personal injury, direct or indirect, for damages and/or failures caused by improper design, application, installation, operation, abuse, and/or misuse of its' products. Conveyors must never be installed, readied for operation, or operated without proper covers and guards installed and securely in place.

**Visit us online at [www.lundellplastics.com](http://www.lundellplastics.com) to see other innovative products! Online ordering NOW AVAILABLE!**

© Lundell Plastics Corporation · 400 W Market St. · Odebolt, IA 51458 · P 712.668.2400 · TF 877.367.7659 · F 712.668.2402